

# Visibility of presumed normal superficial caudal epigastric and caudal mesenteric lymph nodes in cats on abdominal radiographs

R. Brash<sup>1,4</sup>, M. Martín-Ambrosio Francés<sup>2,5</sup>, E. Domínguez<sup>3,4</sup>

1. Davies Veterinary Specialists, Department of Diagnostic Imaging
2. Pride Veterinary Centre, Department of Internal Medicine
3. Anicura ARS Veterinaria Hospital Veterinari, Department of Diagnostic Imaging

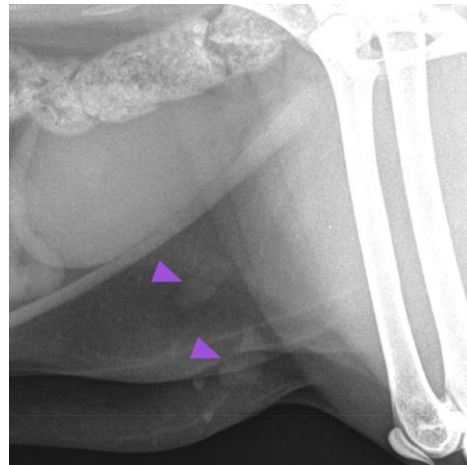
4. Previously Animal Health Trust, Department of Diagnostic Imaging
5. Previously Animal Health Trust, Department of Internal Medicine

## Introduction

Both the superficial caudal epigastric and caudal mesenteric lymph nodes are intermittently visible on routine abdominal radiographs in cats without clinical lymphadenopathy. This study aims to describe the radiographic visibility and size of these lymph nodes in cats.

## Methods

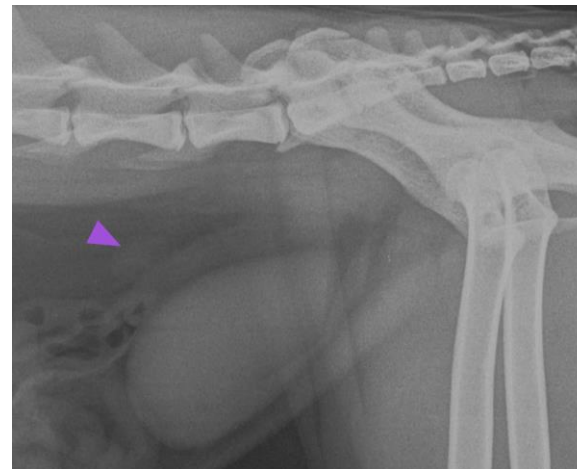
Records were reviewed by a second year resident in internal medicine to select cases with no cause for lymphadenopathy within the caudal mesenteric and superficial caudal epigastric lymph nodes, based on history and clinical findings. Right lateral and orthogonal abdominal radiographs were reviewed by two observers who agreed on the visibility of each lymph node and measured their dimensions. The prevalence of visible lymph nodes in each view and the mean and standard deviation of each measurement were calculated.



Superficial caudal epigastric lymph nodes on lateral and orthogonal radiographs

## Results

On the right lateral view 40/123 cats had a visible caudal mesenteric lymph node and 85/123 had a visible superficial caudal epigastric lymph node, of which 55/85 had two. On the orthogonal view a caudal mesenteric lymph node was visible in only 4/123 cats, with a left and right superficial caudal epigastric lymph node visible in 5/123 and 9/123 of cats respectively.



Caudal mesenteric lymph node on a lateral radiograph

Lymph node	Height (mm)	Width (mm)	Length (mm)
Caudal mesenteric (lateral)	5.5 ± 1.7	-	10.3 ± 3.0
Caudal mesenteric (orthogonal)	-	6.9 ± 2.6	10.1 ± 3.5
Superficial caudal epigastric (lateral)	5.0 ± 1.5	-	9.8 ± 3.3
Superficial caudal epigastric (orthogonal)	-	4.3 ± 1.0	10.5 ± 3.4

## Conclusion

Caudal mesenteric and superficial caudal epigastric lymph nodes are visible on routine feline abdominal radiographs without apparent clinical significance.

## Acknowledgements

With sincere thanks to the Animal Health Trust, where this data was collected.