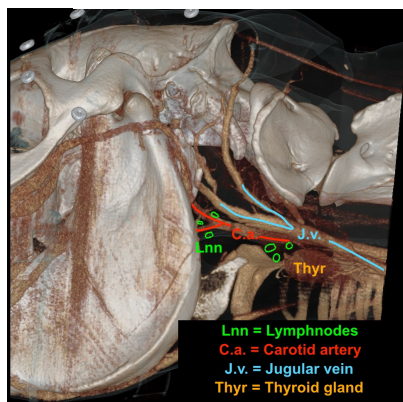


2021

B. Gremillet,
L. Evrard,
A. Charles,
M. Vandersmissen,
M. Dancot,
V. Busoni



Introduction

Lymphnodes are routinely assessed by ultrasound (US) and sampled using US-guidance. Equine lymphnode US assessment is only sporadically reported. The aims of this study were to establish anatomical landmarks, US technique and normal US appearance of clinically relevant lymphnodes difficult to assess by palpation.

Methods

Deep cervical, retropharyngeal, caecal and iliac lymphnodes were imaged by US on 5 clinically healthy horses with linear or curvilinear high frequency probes using 2 fixed US machines (Canon Aplio and Hitachi Aloka). The skin was routinely prepared to assess external lymphnodes. Iliac lymphnodes were assessed transrectally.

Results

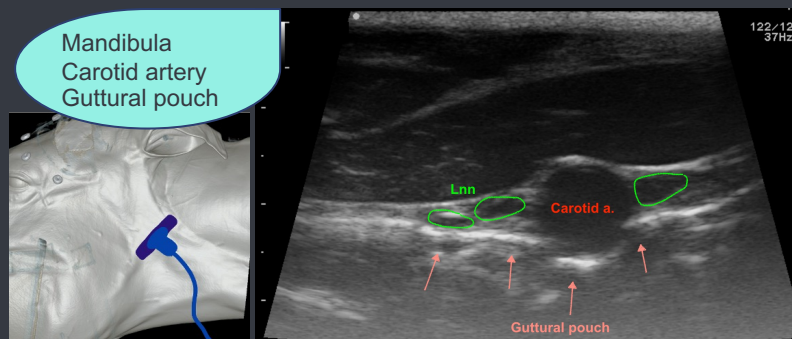
Normal lymphnodes were ovoid (or small almost spherical), well delineated, homogeneous structures, slightly hypoechoic to surrounding perinodal tissue. Iliac lymphnodes were not visualized. All other normal lymphnodes did not exceed 1.5 cm in length and thickness.

Conclusion

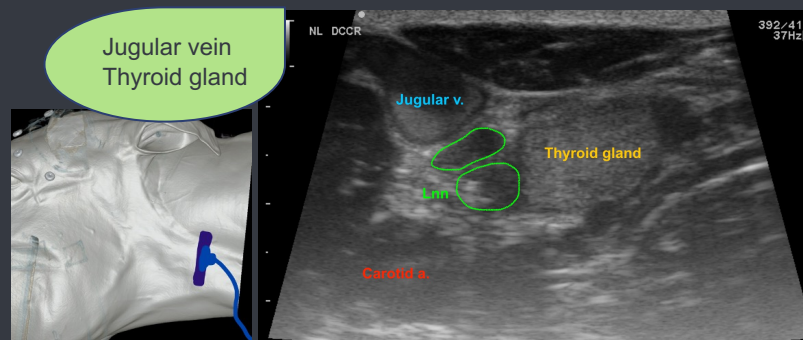
This study provides a useful pictorial essay by describing normal appearance, US technique and landmarks for assessment of deep cervical, retropharyngeal, caecal and iliac lymphnodes in equine practice.

Most useful landmarks

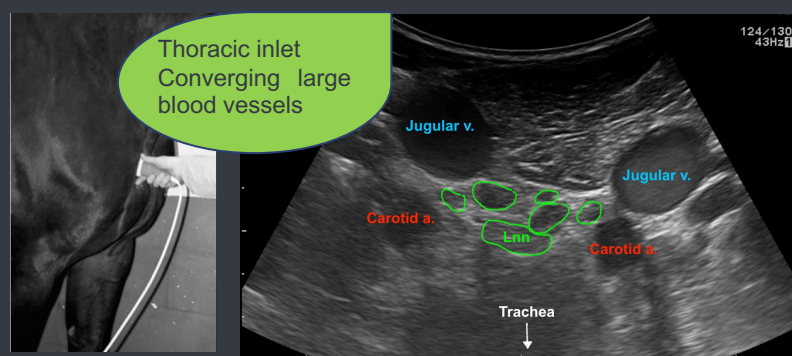
Medial retropharyngeal lymphnodes



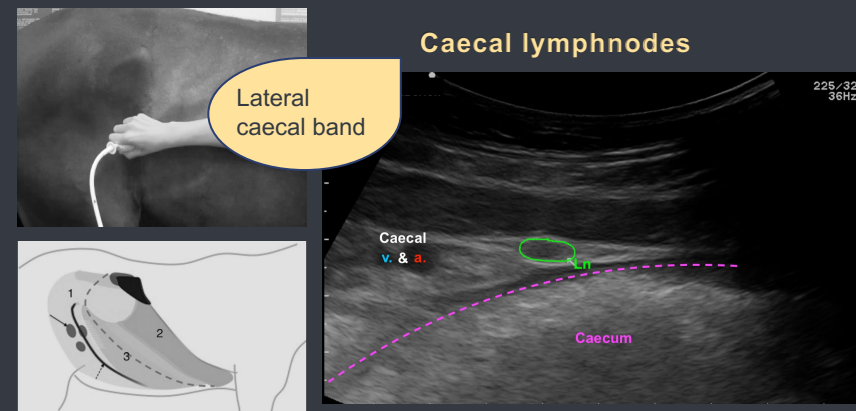
Cranial deep cervical lymphnodes



Caudal deep cervical lymphnodes



Caecal lymphnodes



Iliac lymphnodes

Caudal bifurcation of the aorta
Not visualized in healthy horses

